

CELTwin1-3

Marine and Land Based VHF and Cellular Antenna

CELTwin1-3 is an omnidirectional antenna for coverage of dual bands VHF and cellular GSM900 with one antenna only and one filter. Especially useful with limited space. The CELTwin1-3 is manufactured in premium quality materials in order to prevent galvanic corrosion.

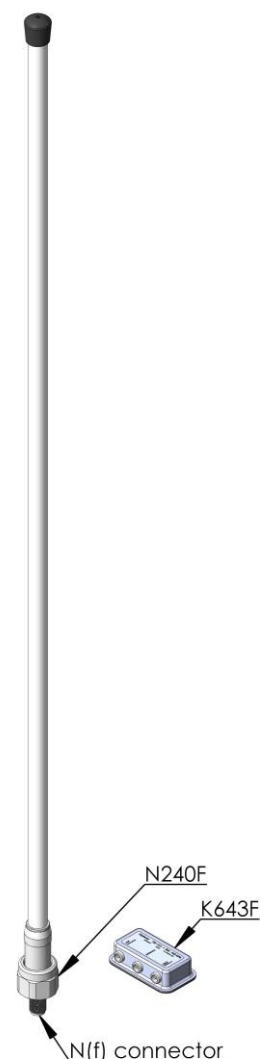
CELTwin1-3 has been sold worldwide for more than four decades. The antenna is subject for improvement at all times. The antenna has the same rugged design as all other AC Antennas products thus it withstands harsh environmental conditions, both on sea and land.

Electrical specifications

Frequency range (MHz)	156.0-162.5 / 870-960
Nominal impedance (ohm)	50
VHF power rating (Watt).	25
Gain (dBd/Marine dB)	0/3
VSWR	< 1.5:1
Polarization	Vertical
Connector	N-female
DC-shorted	No

Mechanical specifications

Length (m/ft)	1.1/3.6
Weight (kg/lbs)(excl. & incl. mount)	0.84/1.85
Wind rating (m/s / mph)	45/101
Material	Fibreglass
Colour	White polyurethane lacquer
Temperature range (°C/°F)	-55 to +60 / -67 to +140
Ingress Protection	IP66



Mounting

N240F mount and K643F filter included.

Can be used with all standard AC Antennas mounting equipment.